

APPENDIX 3c

Addendum to 2020 Cultural Report



CRM TECH

1016 E. Cooley Drive, Suite A/B
Colton, CA 92324

July 21, 2020

Tom Dodson, President
Tom Dodson and Associates
2150 N. Arrowhead Avenue
San Bernardino, CA 92405

Re: Addendum to Historical/Archaeological Resources Reconnaissance
Airport Gateway Specific Plan
Cities of San Bernardino and Highland, San Bernardino County, California
CRM TECH Contract No. 3167/3637

Dear Mr. Dodson:

At your request, CRM TECH has completed a cultural resources assessment on approximately 9.2 acres of developed land that has been added to the Airport Gateway Specific Plan proposed by the Inland Valley Development Agency (IVDA). The additional area of study consists of Assessor's Parcel No. 0136-381-09, which is currently occupied by the NTS San Bernardino Rocket and Fluids Test Laboratory at 3505 E. Third Street. It is located on the southwestern corner of Third Street and Alabama Street, to the northeast of the San Bernardino International Airport, within fractional Section 8 of Township 1 South Range 3 West, and on the southeastern edge of the San Bernardino city limits (Figures 1, 2).

As you know, the original planning area, measuring 675 acres in total and stretching between the Cities of San Bernardino and Highland (Figure 1), was the subject of a cultural resources reconnaissance that CRM TECH completed in 2017 for what was then known as the Fifth and Third Street Corridor Specific Plan (Tang 2017). The objective of this report, as an addendum to the 2017 study, is to assist your firm and the lead agency for the specific plan, namely IVDA, in identifying any "historical resources," as defined by the California Environmental Quality Act (CEQA), that may be present within the additional planning area.

In order to accomplish this objective, CRM TECH reviewed data gathered during the 2017 study for information pertaining to the additional planning area and conducted a field reconnaissance. Due to facility closure during the COVID-19 pandemic and the resulting delays, an update of the 2017 cultural resources records search could not be obtained in time from the South Central Coastal Information Center (SCCIC). The results of the existing records search, however, indicate that the additional planning area was covered by several of the previous cultural resources studies in the vicinity, but that no cultural resources had been identified within or adjacent to its boundaries prior to February 2017.

According to historic maps dated 1858-1996 and aerial photographs taken in 1938-2019, the additional planning area, located on the floodplain on the northern bank of the Santa Ana River and sandwiched between two of its tributaries, City Creek and Plunge Creek, contained no notable man-

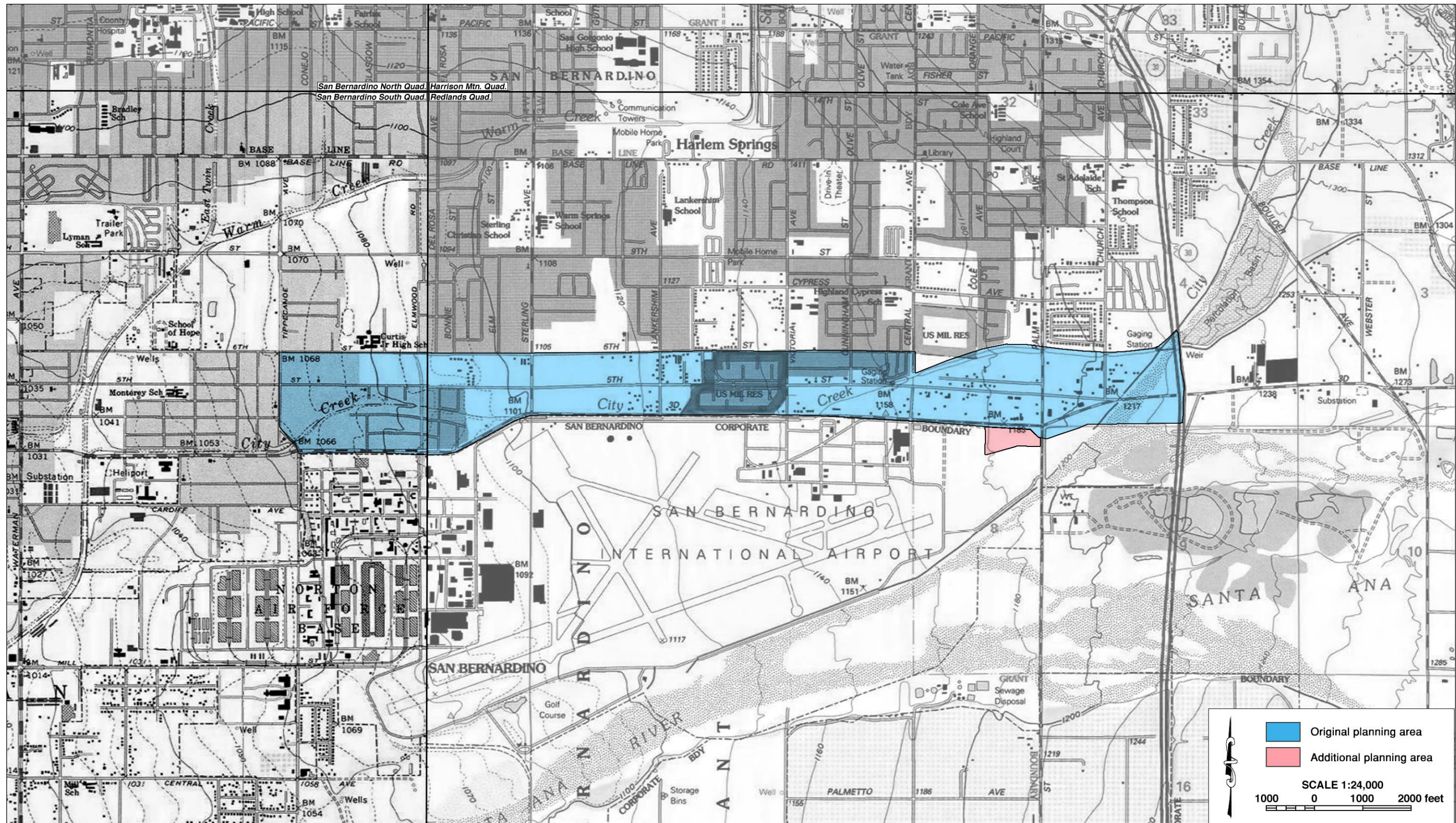


Figure 1. Location of the additional planning area in relation to the original. (Based on USGS Harrison Mountain, Redlands, San Bernardino North, and San Bernardino South, Calif., 7.5' quadrangles)

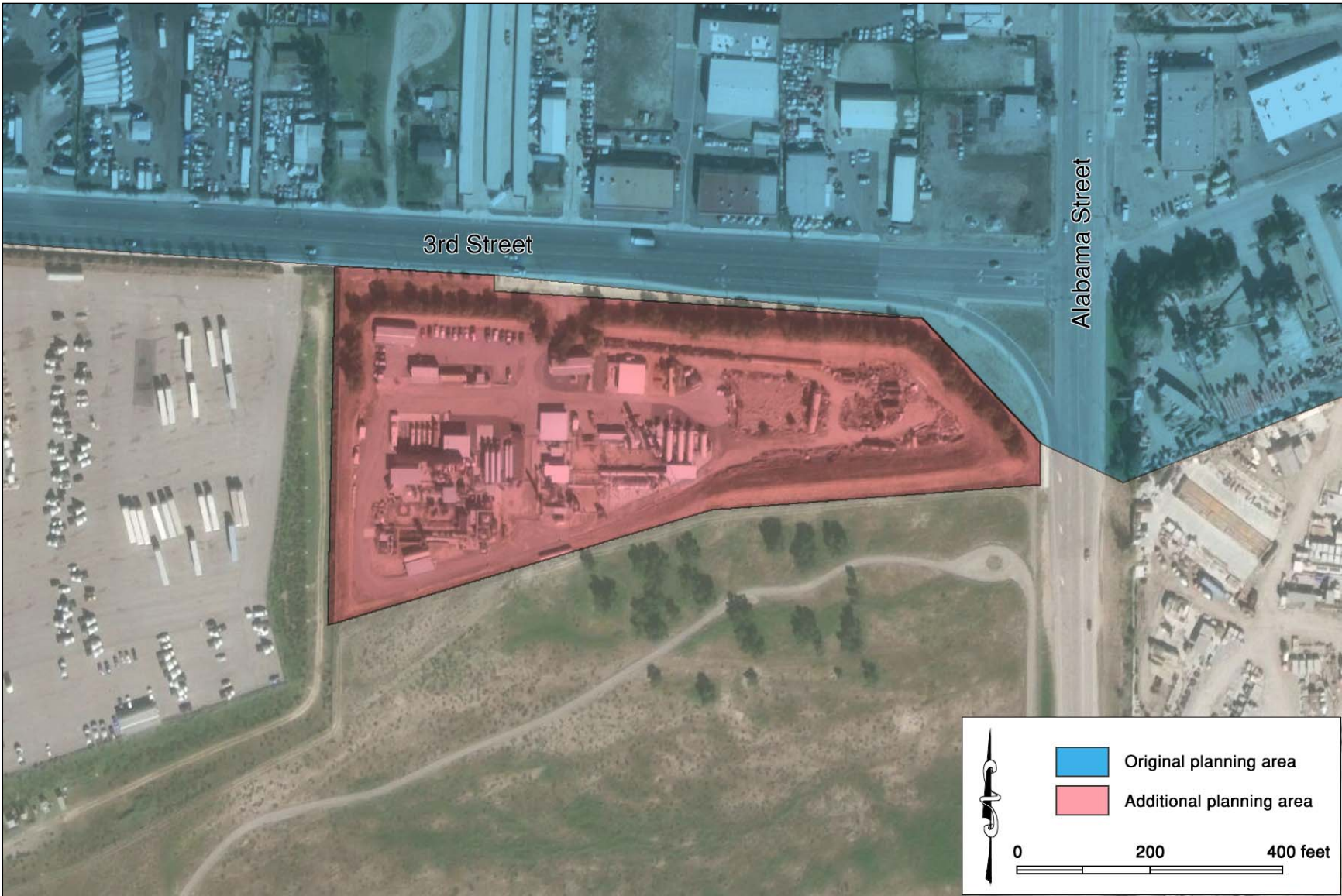


Figure 2. Aerial view of the additional planning area.

made features throughout the historic period except a minor dirt road leading off Third Street (GLO 1858; USGS 1901-1967; NETR Online 1938-1968). The property remained undeveloped and largely unused until the present-day NTS San Bernardino facility was constructed in 2005-2006 (NETR Online 1968-2009; Google Earth 1994-2009). During the construction, the ground surface in the entire area was evidently leveled and graded, and the original surface soils were probably incorporated into earthen berms that were built around the perimeter of the property (Google Earth 2005; 2006).

On July 8, 2020, CRM TECH archaeologist Daniel Ballester, M.S., carried out field reconnaissance of the additional planning area. As security measures at the NTS San Bernardino facility prevented full access to the property, the field reconnaissance was carried out from the perimeter. Ballester's field observations were supplemented with a "virtual" survey by CRM TECH architectural historian Bai "Tom" Tang, M.A., using two- and three-dimensional aerial images available from Google Maps. Despite the limitations in access, Ballester was able to confirm that the ground surface on the property has been extensively disturbed (Figure 3). The existing buildings and other features on the property, being of modern origin, standard industrial design, and utilitarian character, demonstrate no potential to be considered "historical resources."

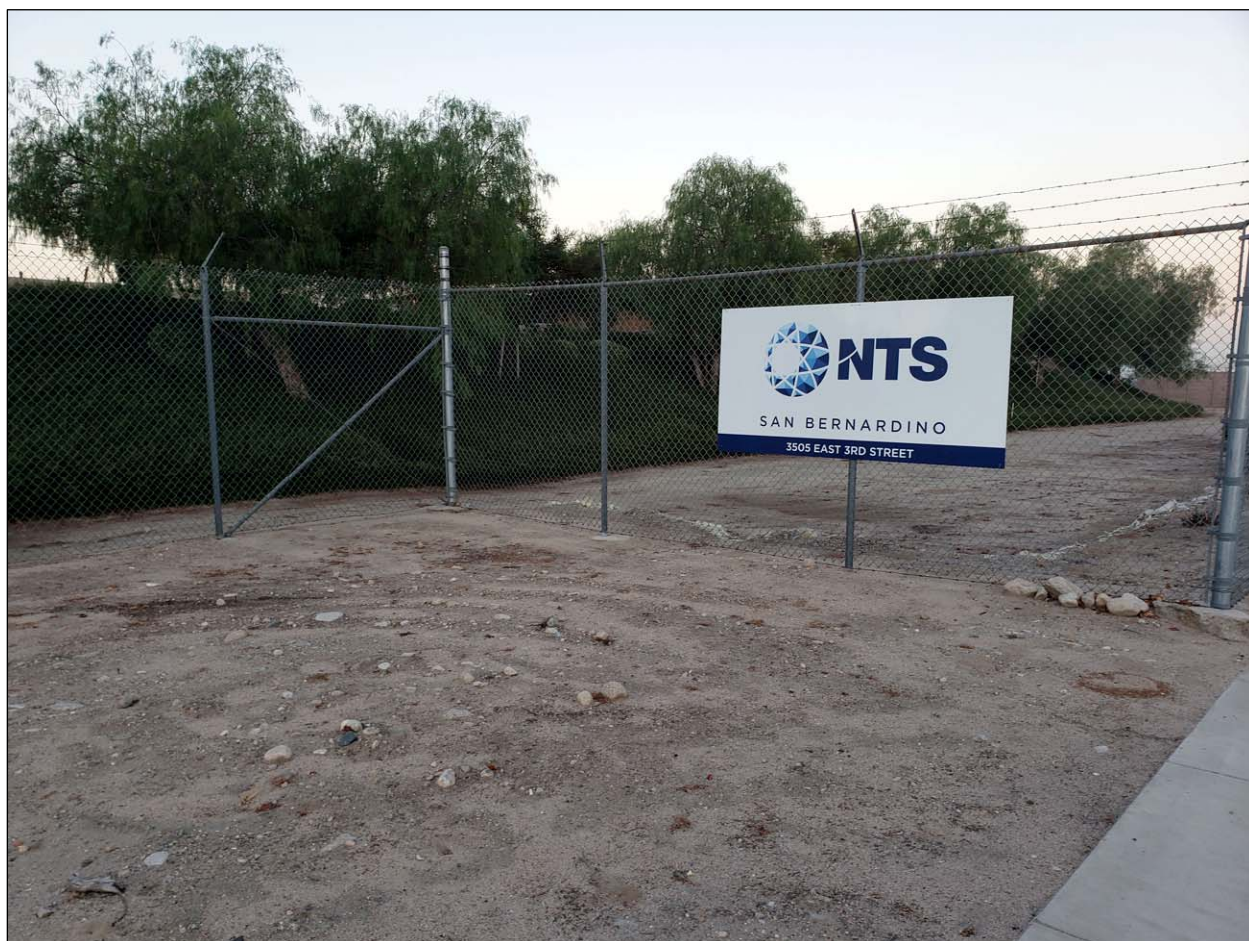
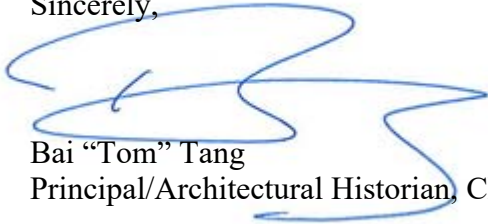


Figure 3. Typical landscape in and around the additional planning area. (Photograph taken on July 8, 2020; view to the southeast)

Based on the research results presented above, CRM TECH concludes that no “historical resources” are known to be present within the additional planning area, and that the area appears to be relatively low in sensitivity for intact deposits of subsurface archaeological remains. Therefore, CRM TECH recommends to IVDA a finding that the addition of Assessor’s Parcel No. 0136-381-09 to the planning area would not cause “a substantial adverse change in the significance of a historical resource” (PRC §21084.1). However, the recommendation made in the 2017 study regarding inadvertent discovery of buried cultural materials during future earth-moving operations also applies to this property.

Thank you for this opportunity to be of service. If you have any questions or need further information on the research procedures completed during this study, please do not hesitate to contact me at (909) 824-6400 or ttang@crmtech.us.

Sincerely,



Bai “Tom” Tang
Principal/Architectural Historian, CRM TECH

References Cited:

- GLO (General Land Office, U.S. Department of the Interior)
1858 Plat Map: Township No. 1 South Range No. 3 West, SBBM, surveyed in 1853-1857.
- Google Earth
1994-2009 Aerial photographs of the project vicinity; taken in 1994, 2002-2007, and 2009.
Available through the Google Earth software.
- NETR Online
1938-2009 Aerial photographs of the project vicinity; taken in 1938, 1959, 1966, 1968, 1980, 1994, 2002, 2005, and 2009. <http://www.historicaerials.com>.
- Tang, Bai “Tom”
2017 Historical/Archaeological Resources Reconnaissance, Fifth and Third Street Corridor Specific Plan, Cities of San Bernardino and Highland, San Bernardino County, California. On file, South Central Coastal Information Center, California State University, Fullerton.
- USGS (United States Geological Survey, U.S. Department of the Interior)
1901 Map: Redlands, Calif. (15’, 1:62,500); surveyed in 1898-1899.
1943 Map: Redlands and Vicinity, Calif. (1:31,680); surveyed in 1939.
1954 Map: Redlands, Calif. (15’, 1:62,500); aerial photographs taken in 1952.
1967 Map: Redlands, Calif. (7.5’, 1:24,000); aerial photos taken in 1966, field-checked in 1967.